

Buffer Tanks

Our line of Chilled Water and Hot water Buffer tanks deliver all the quality and performance you expect from Taco products. They are built to last, shell, heads and ANSI flanges with ASME stamp. Constructed for 125 & 150 psi working pressures all while providing outstanding performance in the field, up to a standard operating temperature of 375°F. These products are available in standard connection sizes from 2" through 12" to meet the needs of a broad range of applications with custom unit sizes available. Our tank volumes range from 50 gallons up to 3000 gallons with a wide variety of sizes, arrangements, connection types, pipe sizes, design temperatures, pressures and insulation options as standard and custom sizes to meet our customers' requirements.



Specifications

Many applications arise where a boiler or chiller may operate in a short cycle condition. Short cycling of the boiler or chiller is not recommended due to the high possibility of damage and or shortened component life, Short cycling is frequently due to the lack of Btu load balance between the demand of the hydronic system and the chiller or boiler Btu capacity.

A buffer tanks is often utilized to introduce additional system fluid volume into the hydronic system to reduce the likelihood of this short cycling. A properly sized buffer tank optimizes the operation of the chiller or boiler and often introduces Btu storage allowing the system to operate without cycling the chiller or boiler. Buffer tanks are available in vertical or horizontal orientations with a wide range of diameters and lengths(available storage volumes.)

Taco Inc. is pleased to offer a sizing app to aid in the sizing of buffer tanks. This app may be located at https://apps.tacomfort.com/wizard_buffer_tanks.html



Access the convenient **Buffer Tanks Wizard** by going to https://apps.tacomfort.com/wizard_buffer_tanks.html

SPECIFICATIONS

- Designed and constructed per ASME Code Section VIII, Division 1.
- Construction: Carbon Steel with Exterior Red Oxide Primer Finish on ALL tanks
- Standard Design Pressure and Temperature: 125 psi @ 375°F
- Flanged inlet and outlet System Connections (standard sizes shown)
- Registered with the National Board of Pressure Vessel Manufacturers
- Solid Internal Baffle
- Base Ring or Saddle
- Raised Nameplate

OPTIONS (Consult Factory)

- Optional materials of construction
- Higher design pressures and temperatures
- Optional System Connection sizes available

THERMAL INSULATION

- None
- Chilled Water 1/2' Armaflex (C)
- Heating Water 1' Silicon Blanket (H)
- Other _ D, F, G, J, K, M, P, R, S & T _ **See page 12 for details**

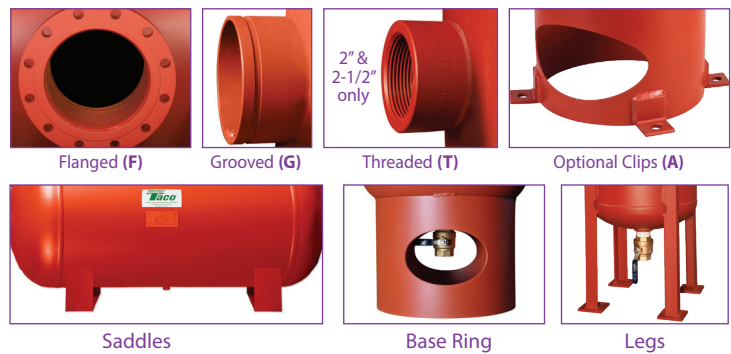
OPTIONAL CONNECTION TYPES

- 'T' Female NPT Threaded 2" & 2 1/2" only Available only on sizes, BT0050 thru BT0350
- Optional Anchor Clips
- Optional 150 PSI Working Pressure

ANSI Flange Data Table Class 150 RF30



| SIZE | O.D. | B.C. | #HOLES | HOLE DIA. | CL-CL |
|------|---------|---------|--------|-----------|-------|
| 2" | 6" | 4-3/4" | 4 | 3/4" | 3.359 |
| 3" | 7-1/2" | 6" | 4 | 3/4" | 4.243 |
| 4" | 9" | 7-1/2" | 8 | 3/4" | 2.870 |
| 6" | 11" | 9-1/2" | 8 | 7/8" | 3.635 |
| 8" | 13-1/2" | 11-3/4" | 8 | 7/8" | 4.497 |
| 10" | 16" | 14-1/4" | 12 | 1" | 3.688 |
| 12" | 19" | 17" | 12 | 1" | 4.400 |

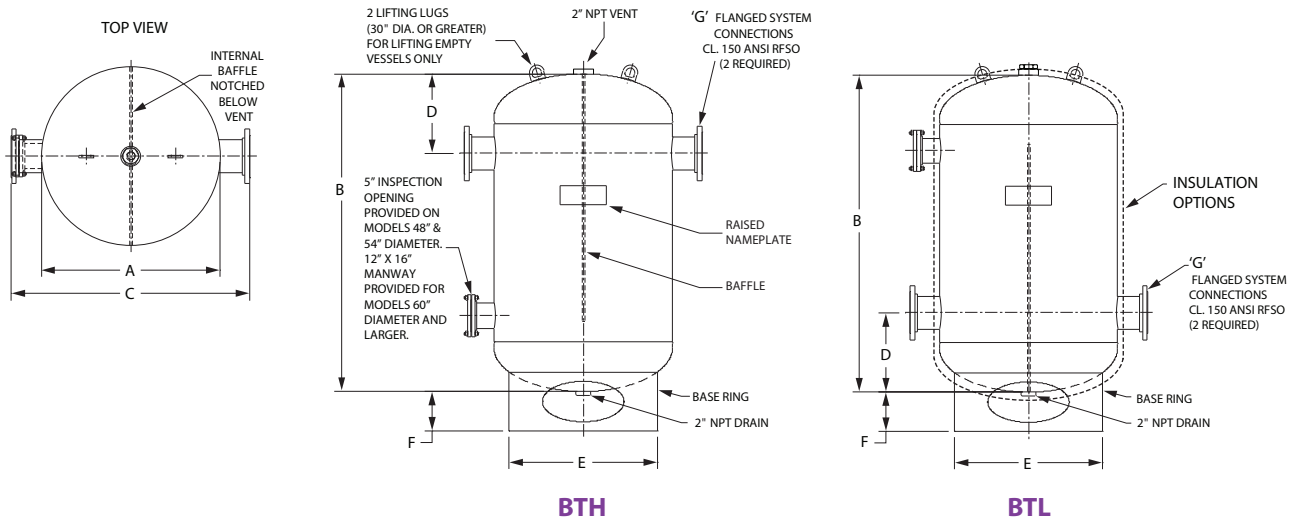


Quick Reference Guide

| Model | Gallons | Actual Gallons | A | B | C | D | E | F | G | Maximum Approx. Dry Wt. (LBS.) | Maximum Flooded Wt. (LBS.) | Surface Area (Sq. Ft.) |
|------------------|---------|----------------|-----------------|-------------------|-------------------------------|----------------|------------------|---------------------|-------------------|--------------------------------|----------------------------|------------------------|
| | | | Tank Dia. (in.) | Tank Height (in.) | Flange Spread (in.) Min./Max. | Head to Flange | Base Ring (Dia.) | Base Ring AFF (in.) | Nozzle Size (in.) | | | |
| BT_0050F__-125NN | 50 | 55 | 20" | 43.0 | 30 | 11-1/2 | 16 | 6-3/4 | 2", 3", 4" | 190 | 607 | 21 |
| BT_0075F__-125NN | 75 | 82 | 24" | 46.0 | 34 | 12-5/8 | 20 | 6-3/4 | 2", 3", 4" | 240 | 866 | 27 |
| BT_0100F__-125NN | 100 | 111 | 24" | 61.0 | 34 | 12-5/8 | 20 | 6-3/4 | 2", 3", 4" | 280 | 1,114 | 34 |
| BT_0125F__-125NN | 125 | 139 | 24" | 76.0 | 34 | 12-5/8 | 20 | 6-3/4 | 2", 3", 4" | 330 | 1,373 | 42 |
| BT_0150F__-125NN | 150 | 168 | 30" | 60.0 | 40 | 14-1/4 | 24 | 8 | 2", 3", 4" | 510 | 1,761 | 43 |
| BT_0180F__-125NN | 180 | 201 | 30" | 71.0 | 40 | 14-1/4 | 24 | 8 | 2", 3", 4" | 590 | 2,091 | 50 |
| BT_0200F__-125NN | 200 | 222 | 30" | 78.0 | 40 | 14-1/4 | 24 | 8 | 2", 3", 4" | 630 | 2,298 | 55 |
| BT_0250F__-125NN | 250 | 278 | 36" | 69.0 | 46 | 16-1/4 | 30 | 7-1/8 | 3", 4", 6" | 710 | 2,795 | 59 |
| BT_0300F__-125NN | 300 | 334 | 36" | 82.0 | 46 | 16-1/4 | 30 | 7-1/8 | 3", 4", 6" | 820 | 3,322 | 69 |
| BT_0350F__-125NN | 350 | 386 | 36" | 94.0 | 46 | 16-1/4 | 30 | 7-1/8 | 3", 4", 6" | 910 | 3,829 | 79 |
| BT_0400F__-125NN | 400 | 443 | 48" | 65.0 | 58 | 18-7/8 | 40 | 8-5/8 | 4", 6", 8" | 1010 | 4,346 | 80 |
| BT_0450F__-125NN | 450 | 497 | 48" | 72.0 | 58 | 18-7/8 | 40 | 8-5/8 | 4", 6", 8" | 1080 | 4,833 | 88 |
| BT_0500F__-125NN | 500 | 551 | 48" | 79.0 | 58 | 18-7/8 | 40 | 8-5/8 | 4", 6", 8" | 1160 | 5,330 | 95 |
| BT_0700F__-125NN | 700 | 712 | 48" | 100.0 | 58 | 18-7/8 | 40 | 8-5/8 | 4", 6", 8" | 1300 | 7,138 | 117 |
| BT_0850F__-125NN | 850 | 873 | 54" | 99.0 | 64 | 22-5/8 | 44 | 9-3/8 | 4", 6", 8" | 1880 | 8,969 | 127 |
| BT_1050F__-125NN | 1,050 | 1,077 | 60" | 99.0 | 72* | 24-3/4 | 50 | 9-3/4 | 6", 8", 10" | 2130 | 10,887 | 143 |
| BT_1250F__-125NN | 1,250 | 1,279 | 60" | 115.9 | 70/72* | 25-3/4 | 50 | 10 | 6", 8", 10", 12" | 2280 | 12,705 | 166 |
| BT_1500F__-125NN | 1,500 | 1,543 | 60" | 137.9 | 70/72* | 25-3/4 | 50 | 10 | 6", 8", 10", 12" | 2740 | 15,250 | 194 |
| BT_1750F__-125NN | 1,750 | 1,755 | 72" | 113.3 | 82/84* | 28-1/2 | 64 | 14-1/8 | 6", 8", 10", 12" | 3340 | 17,935 | 199 |
| BT_2000F__-125NN | 2,000 | 2,014 | 72" | 128.3 | 82/84* | 28-1/2 | 64 | 14-1/8 | 6", 8", 10", 12" | 3640 | 20,320 | 223 |
| BT_2500F__-125NN | 2,500 | 2,547 | 84" | 123.5 | 94/96* | 32 | 72 | 14-1/8 | 6", 8", 10", 12" | 5340 | 26,190 | 256 |
| BT_3000F__-125NN | 3,000 | 3,063 | 84" | 145.5 | 94/96* | 32 | 72 | 14-1/8 | 6", 8", 10", 12" | 6140 | 31,160 | 296 |

BT_ " H " for High Connections, " L " for Low Connections

F_ _ Connection Size Required, Example: F06



Refer to standard submittal as this sheet is a "Quick Reference Guide" only.
 change to: www.tacomfort.com / Products / Tanks / Chilled & Hot Water Buffer Tanks



Quick Reference Guide

Submittal Data 401-181

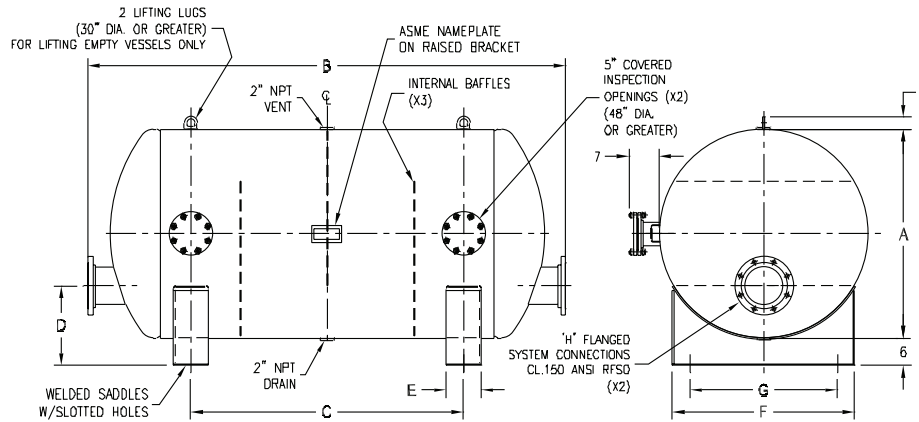
BHL Flanged Horizontal Buffer Tanks with Low Connections

| Model | Tank Volume (gal.) | A | B** | C | D | E | F | G | H | APPROX WEIGHT (LBS.) |
|-----------------|--------------------|-----------------|-------------------|-------------------------------|---------------------|-------------------|----|----|-------------------|----------------------|
| | | Tank Dia. (in.) | Tank Height (in.) | Flange Spread (in.) Min./Max. | AFF to Flange (in.) | Saddle Data (in.) | | | Nozzle Size (in.) | |
| BHL0050F__-125N | 50 | 20 | 53 | 21-1/2 | 11 | 6 | 18 | 14 | 2, 3, 4 | 190 |
| BHL0075F__-125N | 75 | 24 | 56 | 22-1/4 | 12 | 6 | 22 | 18 | 2, 3, 4 | 240 |
| BHL0100F__-125N | 100 | 24 | 71 | 37-1/4 | 12 | 6 | 22 | 18 | 2, 3, 4 | 280 |
| BHL0125F__-125N | 125 | 24 | 86 | 52-1/4 | 12 | 6 | 22 | 18 | 2, 3, 4 | 330 |
| BHL0150F__-125N | 150 | 30 | 70 | 33 | 13-3/4 | 6 | 26 | 20 | 2, 3, 4 | 510 |
| BHL0180F__-125N | 180 | 30 | 81 | 44 | 13-3/4 | 6 | 26 | 20 | 2, 3, 4 | 590 |
| BHL0200F__-125N | 200 | 30 | 88 | 51 | 13-3/4 | 6 | 26 | 20 | 2, 3, 4 | 630 |
| BHL0250F__-125N | 250 | 36 | 79 | 37 | 15-1/4 | 8 | 32 | 24 | 3, 4, 6 | 710 |
| BHL0300F__-125N | 300 | 36 | 92 | 50 | 15-1/4 | 8 | 32 | 24 | 3, 4, 6 | 820 |
| BHL0350F__-125N | 350 | 36 | 104 | 62 | 15-1/4 | 8 | 32 | 24 | 3, 4, 8 | 910 |
| BHL0400F__-125N | 400 | 48 | 75 | 27-3/4 | 18-1/4 | 8 | 42 | 34 | 4, 6, 8 | 1010 |
| BHL0450F__-125N | 450 | 48 | 82 | 34-3/4 | 18-1/4 | 8 | 42 | 34 | 4, 6, 8 | 1080 |
| BHL0500F__-125N | 500 | 48 | 89 | 41-3/4 | 18-1/4 | 8 | 42 | 34 | 4, 6, 8 | 1160 |
| BHL0700F__-125N | 700 | 48 | 110 | 62-3/4 | 18-1/4 | 8 | 42 | 34 | 4, 6, 8 | 1300 |
| BHL0850F__-125N | 850 | 54 | 109 | 54-1/2 | 19-3/4 | 8 | 46 | 38 | 4, 6, 8 | 1880 |
| BHL1050F__-125N | 1050 | 60 | 109 ** | 50-1/8 | 21-1/4 | 8 | 52 | 44 | 6, 8, 10 | 2130 |
| BHL1250F__-125N | 1250 | 60 | 125-7/8 ** | 65 | 21-1/4 | 8 | 52 | 44 | 6, 8, 10, 12 | 2340 |
| BHL1500F__-125N | 1500 | 60 | 147-7/8 ** | 87 | 21-1/4 | 8 | 52 | 44 | 6, 8, 10, 12 | 2740 |
| BHL1750F__-125N | 1750 | 72 | 123-1/4 ** | 57 | 24-1/4 | 8 | 62 | 50 | 6, 8, 10, 12 | 3340 |
| BHL2000F__-125N | 2000 | 72 | 138-1/4 ** | 72 | 24-1/4 | 8 | 62 | 50 | 6, 8, 10, 12 | 3640 |
| BHL2500F__-125N | 2500 | 84 | 133-1/2 ** | 60 | 27-1/4 | 8 | 72 | 60 | 6, 8, 10, 12 | 5340 |
| BHL3000F__-125N | 3000 | 84 | 155-1/2 ** | 82 | 27-1/4 | 8 | 72 | 60 | 6, 8, 10, 12 | 6140 |

**Add 2" to 'B' dimension when specifying 10" or 12" nozzles.

SIZES & DIMENSIONS

All dimensions shown are subject to change and should not be used for pre-piping. Contact your local Taco representative should certified dimensional drawings be required.



BHL

Refer to standard submittal as this sheet is a "Quick Reference Guide" only.
 change to: www.tacomfort.com / Products / Tanks / Chilled & Hot Water Buffer Tanks



Submittal Data 401-180

'BHH' Flanged Horizontal Buffer Tanks with High Connections

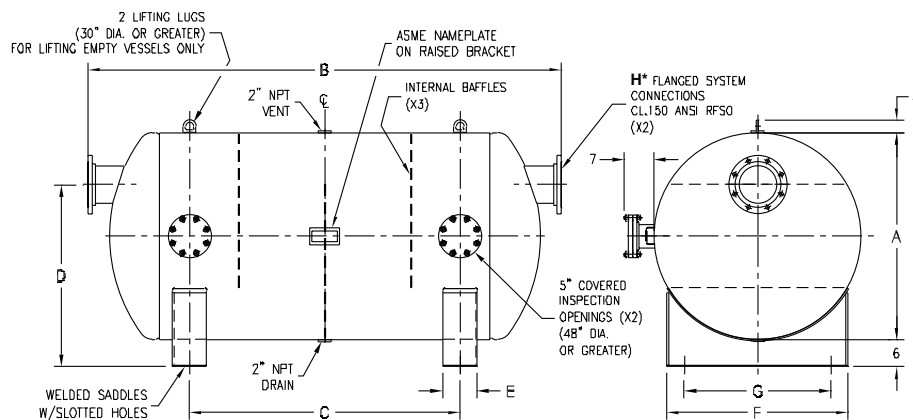
Quick Reference Guide

| Model | Tank Volume (gal.) | A | B** | C | D | E | F | G | H | APPROX WEIGHT (LBS.) |
|-----------------|--------------------|-----------------|-------------------|-------------------------------|---------------------|-------------------|----|----|-------------------|----------------------|
| | | Tank Dia. (in.) | Tank Height (in.) | Flange Spread (in.) Min./Max. | AFF to Flange (in.) | Saddle Data (in.) | | | Nozzle Size (in.) | |
| BHH0050F__-125N | 50 | 20 | 53 | 21-1/2 | 21 | 6 | 18 | 14 | 2, 3, 4 | 190 |
| BHH0075F__-125N | 75 | 24 | 56 | 22-1/4 | 24 | 6 | 22 | 18 | 2, 3, 4 | 240 |
| BHH0100F__-125N | 100 | 24 | 71 | 37-1/4 | 24 | 6 | 22 | 18 | 2, 3, 4 | 280 |
| BHH0125F__-125N | 125 | 24 | 86 | 52-1/4 | 24 | 6 | 22 | 18 | 2, 3, 4 | 330 |
| BHH0150F__-125N | 150 | 30 | 70 | 33 | 28-3/4 | 6 | 26 | 20 | 2, 3, 4 | 510 |
| BHH0180F__-125N | 180 | 30 | 81 | 44 | 28-3/4 | 6 | 26 | 20 | 2, 3, 4 | 590 |
| BHH0200F__-125N | 200 | 30 | 88 | 51 | 28-3/4 | 6 | 26 | 20 | 2, 3, 4 | 630 |
| BHH0250F__-125N | 250 | 36 | 79 | 37 | 33-1/4 | 8 | 32 | 24 | 3, 4, 6 | 710 |
| BHH0300F__-125N | 300 | 36 | 92 | 50 | 33-1/4 | 8 | 32 | 24 | 3, 4, 6 | 820 |
| BHH0350F__-125N | 350 | 36 | 104 | 62 | 33-1/4 | 8 | 32 | 24 | 3, 4, 8 | 910 |
| BHH0400F__-125N | 400 | 48 | 75 | 27-3/4 | 42-1/4 | 8 | 42 | 34 | 4, 6, 8 | 1010 |
| BHH0450F__-125N | 450 | 48 | 82 | 34-3/4 | 42-1/4 | 8 | 42 | 34 | 4, 6, 8 | 1080 |
| BHH0500F__-125N | 500 | 48 | 89 | 41-3/4 | 42-1/4 | 8 | 42 | 34 | 4, 6, 8 | 1160 |
| BHH0700F__-125N | 700 | 48 | 110 | 62-3/4 | 42-1/4 | 8 | 42 | 34 | 4, 6, 8 | 1300 |
| BHH0850F__-125N | 850 | 54 | 109 | 54-1/2 | 46-3/4 | 8 | 46 | 38 | 4, 6, 8 | 1880 |
| BHH1050F__-125N | 1050 | 60 | 109 ** | 50-1/8 | 51-1/4 | 8 | 52 | 44 | 6, 8, 10 | 2130 |
| BHH1250F__-125N | 1250 | 60 | 125-7/8 ** | 65 | 51-1/4 | 8 | 52 | 44 | 6, 8, 10, 12 | 2340 |
| BHH1500F__-125N | 1500 | 60 | 147-7/8 ** | 87 | 51-1/4 | 8 | 52 | 44 | 6, 8, 10, 12 | 2740 |
| BHH1750F__-125N | 1750 | 72 | 123-1/4 ** | 57 | 60-1/4 | 8 | 62 | 50 | 6, 8, 10, 12 | 3340 |
| BHH2000F__-125N | 2000 | 72 | 138-1/4 ** | 72 | 60-1/4 | 8 | 62 | 50 | 6, 8, 10, 12 | 3640 |
| BHH2500F__-125N | 2500 | 84 | 133-1/2 ** | 60 | 69-1/4 | 8 | 72 | 60 | 6, 8, 10, 12 | 5340 |
| BHH3000F__-125N | 3000 | 84 | 155-1/2 ** | 82 | 69-1/4 | 8 | 72 | 60 | 6, 8, 10, 12 | 6140 |

**Add 2" to 'B' dimension when specifying 10" or 12" nozzles.

SIZES & DIMENSIONS

All dimensions shown are subject to change and should not be used for pre-piping. Contact your local Taco representative should certified dimensional drawings be required.



BHH

Refer to standard submittal as this sheet is a "Quick Reference Guide" only.
 change to: www.tacomfort.com / Products / Tanks / Chilled & Hot Water Buffer Tanks



Quick Reference Guide

Submittal Data 401-182

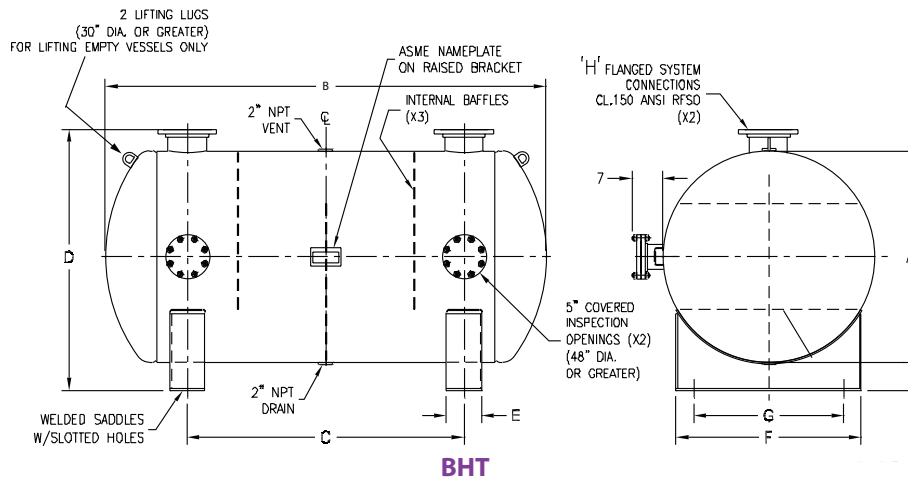
'BHT' Flanged Horizontal Buffer Tanks with Top Connections

| Model | Tank Volume (gal.) | A | B | C | D** | E | | | F | G | H | APPROX WEIGHT (LBS.) |
|-----------------|--------------------|-----------------|-------------------|-------------------------------|---------------------|-------------------|----|----|-------------------|------|---|----------------------|
| | | Tank Dia. (in.) | Tank Height (in.) | Flange Spread (in.) Min./Max. | AFF to Flange (in.) | Saddle Data (in.) | | | Nozzle Size (in.) | | | |
| BHT0050F__-125N | 50 | 20 | 43 | 21-1/2 | 21 | 6 | 18 | 14 | 2, 3, 4 | 190 | | |
| BHT0075F__-125N | 75 | 24 | 46 | 22-1/4 | 24 | 6 | 22 | 18 | 2, 3, 4 | 240 | | |
| BHT0100F__-125N | 100 | 24 | 61 | 37-1/4 | 24 | 6 | 22 | 18 | 2, 3, 4 | 280 | | |
| BHT0125F__-125N | 125 | 24 | 76 | 52-1/4 | 24 | 6 | 22 | 18 | 2, 3, 4 | 330 | | |
| BHT0150F__-125N | 150 | 30 | 60 | 33 | 28-3/4 | 6 | 26 | 20 | 2, 3, 4 | 510 | | |
| BHT0180F__-125N | 180 | 30 | 71 | 44 | 28-3/4 | 6 | 26 | 20 | 2, 3, 4 | 590 | | |
| BHT0200F__-125N | 200 | 30 | 78 | 51 | 28-3/4 | 6 | 26 | 20 | 2, 3, 4 | 630 | | |
| BHT0250F__-125N | 250 | 36 | 69 | 37 | 33-1/4 | 8 | 32 | 24 | 3, 4, 6 | 710 | | |
| BHT0300F__-125N | 300 | 36 | 82 | 50 | 33-1/4 | 8 | 32 | 24 | 3, 4, 6 | 820 | | |
| BHT0350F__-125N | 350 | 36 | 94 | 62 | 33-1/4 | 8 | 32 | 24 | 3, 4, 8 | 910 | | |
| BHT0400F__-125N | 400 | 48 | 65 | 27-3/4 | 42-1/4 | 8 | 42 | 34 | 4, 6, 8 | 1010 | | |
| BHT0450F__-125N | 450 | 48 | 72 | 34-3/4 | 42-1/4 | 8 | 42 | 34 | 4, 6, 8 | 1080 | | |
| BHT0500F__-125N | 500 | 48 | 79 | 41-3/4 | 42-1/4 | 8 | 42 | 34 | 4, 6, 8 | 1160 | | |
| BHT0700F__-125N | 700 | 48 | 100 | 62-3/4 | 42-1/4 | 8 | 42 | 34 | 4, 6, 8 | 1300 | | |
| BHT0850F__-125N | 850 | 54 | 99 | 54-1/2 | 46-3/4 | 8 | 46 | 38 | 4, 6, 8 | 1880 | | |
| BHT1050F__-125N | 1050 | 60 | 99 | 50-1/8 | 51-1/4 | 8 | 52 | 44 | 6, 8, 10 | 2130 | | |
| BHT1250F__-125N | 1250 | 60 | 115 7/8 | 65 | 51-1/4 | 8 | 52 | 44 | 6, 8, 10, 12 | 2340 | | |
| BHT1500F__-125N | 1500 | 60 | 137 7/8 | 87 | 51-1/4 | 8 | 52 | 44 | 6, 8, 10, 12 | 2740 | | |
| BHT1750F__-125N | 1750 | 72 | 113 1/4 | 57 | 60-1/4 | 8 | 62 | 50 | 6, 8, 10, 12 | 3340 | | |
| BHT2000F__-125N | 2000 | 72 | 128 1/4 | 72 | 60-1/4 | 8 | 62 | 50 | 6, 8, 10, 12 | 3640 | | |
| BHT2500F__-125N | 2500 | 84 | 123 1/2 | 60 | 69-1/4 | 8 | 72 | 60 | 6, 8, 10, 12 | 5340 | | |
| BHT3000F__-125N | 3000 | 84 | 145 1/2 | 82 | 69-1/4 | 8 | 72 | 60 | 6, 8, 10, 12 | 6140 | | |

**Add 1" to 'D' dimension when specifying 10" or 12" nozzles.

SIZES & DIMENSIONS

All dimensions shown are subject to change and should not be used for pre-piping. Contact your local Taco representative should certified dimensional drawings be required.



Refer to standard submittal as this sheet is a "Quick Reference Guide" only.
 change to: www.tacomfort.com / Products / Tanks / Chilled & Hot Water Buffer Tanks



Submittal Data 401-183

'BHS' Flanged Horizontal Buffer Tanks with Side Connections

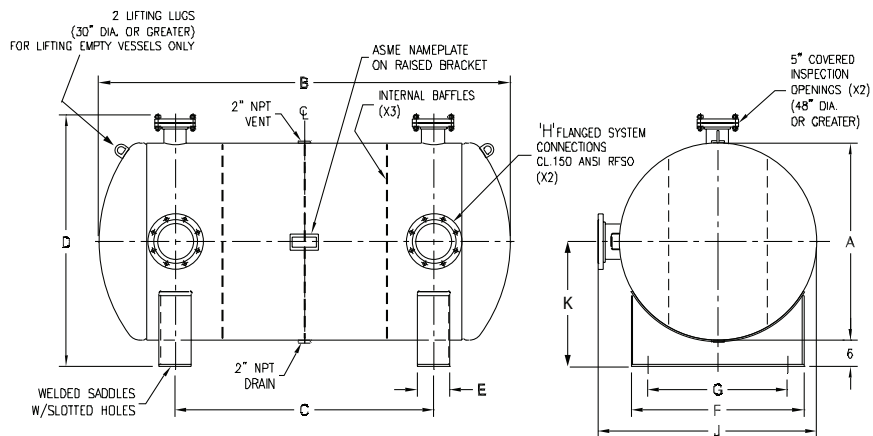
Quick Reference Guide

| Model | Tank Vol. (gal.) | A | B | C | D** | E | F | G | H | J | K | APPROX WEIGHT (LBS.) |
|-----------------|------------------|-----------------|-------------------|-------------------------------|---------------------|-------------------|----|----|-------------------|-------|--------|----------------------|
| | | Tank Dia. (in.) | Tank Height (in.) | Flange Spread (in.) Min./Max. | AFF to Flange (in.) | Saddle Data (in.) | | | Nozzle Size (in.) | (in.) | (in.) | |
| BHS0050F__-125N | 50 | 20 | 43 | 21-1/2 | 21 | 6 | 18 | 14 | 2, 3, 4 | 25 | 16 | 190 |
| BHS0075F__-125N | 75 | 24 | 46 | 22-1/4 | 24 | 6 | 22 | 18 | 2, 3, 4 | 29 | 18 | 240 |
| BHS0100F__-125N | 100 | 24 | 61 | 37-1/4 | 24 | 6 | 22 | 18 | 2, 3, 4 | 29 | 18 | 280 |
| BHS0125F__-125N | 125 | 24 | 76 | 52-1/4 | 24 | 6 | 22 | 18 | 2, 3, 4 | 29 | 18 | 330 |
| BHS0150F__-125N | 150 | 30 | 60 | 33 | 28-3/4 | 6 | 26 | 20 | 2, 3, 4 | 35 | 21-1/4 | 510 |
| BHS0180F__-125N | 180 | 30 | 71 | 44 | 28-3/4 | 6 | 26 | 20 | 2, 3, 4 | 35 | 21-1/4 | 590 |
| BHS0200F__-125N | 200 | 30 | 78 | 51 | 28-3/4 | 6 | 26 | 20 | 2, 3, 4 | 35 | 21-1/4 | 630 |
| BHS0250F__-125N | 250 | 36 | 69 | 37 | 33-1/4 | 8 | 32 | 24 | 3, 4, 6 | 41 | 24-1/4 | 710 |
| BHS0300F__-125N | 300 | 36 | 82 | 50 | 33-1/4 | 8 | 32 | 24 | 3, 4, 6 | 41 | 24-1/4 | 820 |
| BHS0350F__-125N | 350 | 36 | 94 | 62 | 33-1/4 | 8 | 32 | 24 | 3, 4, 8 | 41 | 24-1/4 | 910 |
| BHS0400F__-125N | 400 | 48 | 65 | 27-3/4 | 42-1/4 | 8 | 42 | 34 | 4, 6, 8 | 53 | 30-1/4 | 1010 |
| BHS0450F__-125N | 450 | 48 | 72 | 34-3/4 | 42-1/4 | 8 | 42 | 34 | 4, 6, 8 | 53 | 30-1/4 | 1080 |
| BHS0500F__-125N | 500 | 48 | 79 | 41-3/4 | 42-1/4 | 8 | 42 | 34 | 4, 6, 8 | 53 | 30-1/4 | 1160 |
| BHS0700F__-125N | 700 | 48 | 100 | 62-3/4 | 42-1/4 | 8 | 42 | 34 | 4, 6, 8 | 53 | 30-1/4 | 1300 |
| BHS0850F__-125N | 850 | 54 | 99 | 54-1/2 | 46-3/4 | 8 | 46 | 38 | 4, 6, 8 | 59 | 33-1/4 | 1880 |
| BHS1050F__-125N | 1050 | 60 | 99 | 50-1/8 | 51-1/4 | 8 | 52 | 44 | 6, 8, 10 | 65 | 36-1/4 | 2130 |
| BHS1250F__-125N | 1250 | 60 | 115-7/8 | 65 | 51-1/4 | 8 | 52 | 44 | 6, 8, 10, 12 | 65** | 36-1/4 | 2340 |
| BHS1500F__-125N | 1500 | 60 | 137-7/8 | 87 | 51-1/4 | 8 | 52 | 44 | 6, 8, 10, 12 | 65** | 36-1/4 | 2740 |
| BHS1750F__-125N | 1750 | 72 | 113-1/4 | 57 | 60-1/4 | 8 | 62 | 50 | 6, 8, 10, 12 | 77** | 42-1/4 | 3340 |
| BHS2000F__-125N | 2000 | 72 | 128-1/4 | 72 | 60-1/4 | 8 | 62 | 50 | 6, 8, 10, 12 | 77** | 42-1/4 | 3640 |
| BHS2500F__-125N | 2500 | 84 | 123-1/2 | 60 | 69-1/4 | 8 | 72 | 60 | 6, 8, 10, 12 | 89** | 48-1/4 | 5340 |
| BHS3000F__-125N | 3000 | 84 | 145-1/2 | 82 | 69-1/4 | 8 | 72 | 60 | 6, 8, 10, 12 | 89** | 48-1/4 | 6140 |

**Add 1" to 'J' dimension when specifying 10" or 12" nozzles.

SIZES & DIMENSIONS

All dimensions shown are subject to change and should not be used for pre-piping. Contact your local Taco representative should certified dimensional drawings be required.



BHS

Refer to standard submittal as this sheet is a "Quick Reference Guide" only.
 change to: www.tacomfort.com / Products / Tanks / Chilled & Hot Water Buffer Tanks



Quick Reference Guide

Submittal Data 401-185

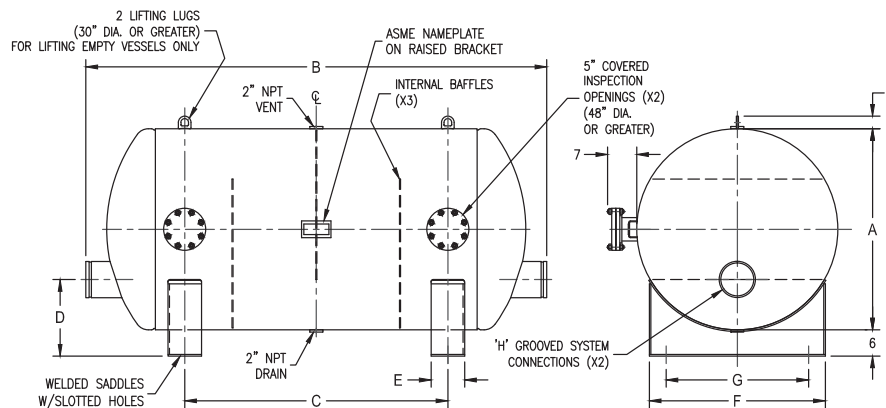
'BHL' Grooved Horizontal Buffer Tanks with Low Connections

| Model | Tank Volume (gal.) | A | B** | C | D | E | F | G | H | APPROX WEIGHT (LBS.) |
|-----------------|--------------------|-----------------|-------------------|-------------------------------|---------------------|-------------------|----|----|-------------------|----------------------|
| | | Tank Dia. (in.) | Tank Height (in.) | Flange Spread (in.) Min./Max. | AFF to Flange (in.) | Saddle Data (in.) | | | Nozzle Size (in.) | |
| BHL0050F__-125N | 50 | 20 | 53 | 21-1/2 | 21 | 6 | 18 | 14 | 2, 3, 4 | 190 |
| BHL0075F__-125N | 75 | 24 | 56 | 22-1/4 | 24 | 6 | 22 | 18 | 2, 3, 4 | 240 |
| BHL0100F__-125N | 100 | 24 | 71 | 37-1/4 | 24 | 6 | 22 | 18 | 2, 3, 4 | 280 |
| BHL0125F__-125N | 125 | 24 | 86 | 52-1/4 | 24 | 6 | 22 | 18 | 2, 3, 4 | 330 |
| BHL0150F__-125N | 150 | 30 | 70 | 33 | 28-3/4 | 6 | 26 | 20 | 2, 3, 4 | 510 |
| BHL0180F__-125N | 180 | 30 | 81 | 44 | 28-3/4 | 6 | 26 | 20 | 2, 3, 4 | 590 |
| BHL0200F__-125N | 200 | 30 | 88 | 51 | 28-3/4 | 6 | 26 | 20 | 2, 3, 4 | 630 |
| BHL0250F__-125N | 250 | 36 | 79 | 37 | 33-1/4 | 8 | 32 | 24 | 3, 4, 6 | 710 |
| BHL0300F__-125N | 300 | 36 | 92 | 50 | 33-1/4 | 8 | 32 | 24 | 3, 4, 6 | 820 |
| BHL0350F__-125N | 350 | 36 | 104 | 62 | 33-1/4 | 8 | 32 | 24 | 3, 4, 8 | 910 |
| BHL0400F__-125N | 400 | 48 | 75 | 27-3/4 | 42-1/4 | 8 | 42 | 34 | 4, 6, 8 | 1010 |
| BHL0450F__-125N | 450 | 48 | 82 | 34-3/4 | 42-1/4 | 8 | 42 | 34 | 4, 6, 8 | 1080 |
| BHL0500F__-125N | 500 | 48 | 89 | 41-3/4 | 42-1/4 | 8 | 42 | 34 | 4, 6, 8 | 1160 |
| BHL0700F__-125N | 700 | 48 | 110 | 62-3/4 | 42-1/4 | 8 | 42 | 34 | 4, 6, 8 | 1300 |
| BHL0850F__-125N | 850 | 54 | 109 | 54-1/2 | 46-3/4 | 8 | 46 | 38 | 4, 6, 8 | 1880 |
| BHL1050F__-125N | 1050 | 60 | 109** | 50-1/8 | 51-1/4 | 8 | 52 | 44 | 6, 8, 10 | 2130 |
| BHL1250F__-125N | 1250 | 60 | 125-7/8 | 65 | 51-1/4 | 8 | 52 | 44 | 6, 8, 10, 12 | 2340 |
| BHL1500F__-125N | 1500 | 60 | 147-7/8 | 87 | 51-1/4 | 8 | 52 | 44 | 6, 8, 10, 12 | 2740 |
| BHL1750F__-125N | 1750 | 72 | 123-1/4 | 57 | 60-1/4 | 8 | 62 | 50 | 6, 8, 10, 12 | 3340 |
| BHL2000F__-125N | 2000 | 72 | 138-1/4 | 72 | 60-1/4 | 8 | 62 | 50 | 6, 8, 10, 12 | 3640 |
| BHL2500F__-125N | 2500 | 84 | 133-1/2 | 60 | 69-1/4 | 8 | 72 | 60 | 6, 8, 10, 12 | 5340 |
| BHL3000F__-125N | 3000 | 84 | 155-1/2 | 82 | 69-1/4 | 8 | 72 | 60 | 6, 8, 10, 12 | 6140 |

**Add 2" to 'B' dimension when specifying 10" or 12" nozzles.

SIZES & DIMENSIONS

All dimensions shown are subject to change and should not be used for pre-piping. Contact your local Taco representative should certified dimensional drawings be required.



BHL Grooved Connections

Refer to standard submittal as this sheet is a "Quick Reference Guide" only.
 change to: www.tacomfort.com / Products / Tanks / Chilled & Hot Water Buffer Tanks



Submittal Data 401-184

'BHH' Grooved Horizontal Buffer Tanks with High Connections

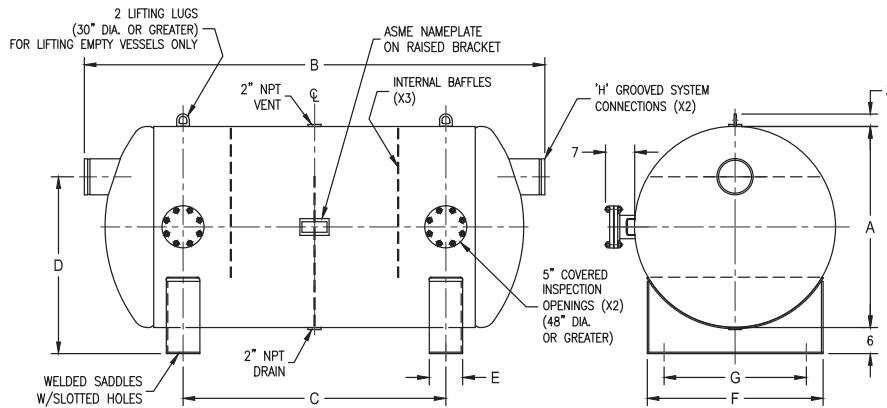
Quick Reference Guide

| Model | Tank Volume (gal.) | A | B** | C | D | E | F | G | H | APPROX WEIGHT (LBS.) |
|-----------------|--------------------|-----------------|-------------------|-------------------------------|---------------------|-------------------|----|----|-------------------|----------------------|
| | | Tank Dia. (in.) | Tank Height (in.) | Flange Spread (in.) Min./Max. | AFF to Flange (in.) | Saddle Data (in.) | | | Nozzle Size (in.) | |
| BHH0050F__-125N | 50 | 20 | 53 | 21-1/2 | 21 | 6 | 18 | 14 | 2, 3, 4 | 190 |
| BHH0075F__-125N | 75 | 24 | 56 | 22-1/4 | 24 | 6 | 22 | 18 | 2, 3, 4 | 240 |
| BHH0100F__-125N | 100 | 24 | 71 | 37-1/4 | 24 | 6 | 22 | 18 | 2, 3, 4 | 280 |
| BHH0125F__-125N | 125 | 24 | 86 | 52-1/4 | 24 | 6 | 22 | 18 | 2, 3, 4 | 330 |
| BHH0150F__-125N | 150 | 30 | 70 | 33 | 28-3/4 | 6 | 26 | 20 | 2, 3, 4 | 510 |
| BHH0180F__-125N | 180 | 30 | 81 | 44 | 28-3/4 | 6 | 26 | 20 | 2, 3, 4 | 590 |
| BHH0200F__-125N | 200 | 30 | 88 | 51 | 28-3/4 | 6 | 26 | 20 | 2, 3, 4 | 630 |
| BHH0250F__-125N | 250 | 36 | 79 | 37 | 33-1/4 | 8 | 32 | 24 | 3, 4, 6 | 710 |
| BHH0300F__-125N | 300 | 36 | 92 | 50 | 33-1/4 | 8 | 32 | 24 | 3, 4, 6 | 820 |
| BHH0350F__-125N | 350 | 36 | 104 | 62 | 33-1/4 | 8 | 32 | 24 | 3, 4, 8 | 910 |
| BHH0400F__-125N | 400 | 48 | 75 | 27-3/4 | 42-1/4 | 8 | 42 | 34 | 4, 6, 8 | 1010 |
| BHH0450F__-125N | 450 | 48 | 82 | 34-3/4 | 42-1/4 | 8 | 42 | 34 | 4, 6, 8 | 1080 |
| BHH0500F__-125N | 500 | 48 | 89 | 41-3/4 | 42-1/4 | 8 | 42 | 34 | 4, 6, 8 | 1160 |
| BHH0700F__-125N | 700 | 48 | 110 | 62-3/4 | 42-1/4 | 8 | 42 | 34 | 4, 6, 8 | 1300 |
| BHH0850F__-125N | 850 | 54 | 109 | 54-1/2 | 46-3/4 | 8 | 46 | 38 | 4, 6, 8 | 1880 |
| BHH1050F__-125N | 1050 | 60 | 109** | 50-1/8 | 51-1/4 | 8 | 52 | 44 | 6, 8, 10 | 2130 |
| BHH1250F__-125N | 1250 | 60 | 125-7/8 | 65 | 51-1/4 | 8 | 52 | 44 | 6, 8, 10, 12 | 2340 |
| BHH1500F__-125N | 1500 | 60 | 147-7/8 | 87 | 51-1/4 | 8 | 52 | 44 | 6, 8, 10, 12 | 2740 |
| BHH1750F__-125N | 1750 | 72 | 123-1/4 | 57 | 60-1/4 | 8 | 62 | 50 | 6, 8, 10, 12 | 3340 |
| BHH2000F__-125N | 2000 | 72 | 138-1/4 | 72 | 60-1/4 | 8 | 62 | 50 | 6, 8, 10, 12 | 3640 |
| BHL2500F__-125N | 2500 | 84 | 133-1/2 | 60 | 69-1/4 | 8 | 72 | 60 | 6, 8, 10, 12 | 5340 |
| BHL3000F__-125N | 3000 | 84 | 155-1/2 | 82 | 69-1/4 | 8 | 72 | 60 | 6, 8, 10, 12 | 6140 |

**Add 2" to 'B' dimension when specifying 10" or 12" nozzles.

SIZES & DIMENSIONS

All dimensions shown are subject to change and should not be used for pre-piping. Contact your local Taco representative should certified dimensional drawings be required.



BHH Grooved Connections

Refer to standard submittal as this sheet is a "Quick Reference Guide" only.
 change to: www.tacomfort.com / Products / Tanks / Chilled & Hot Water Buffer Tanks



Quick Reference Guide

Submittal Data 401-186

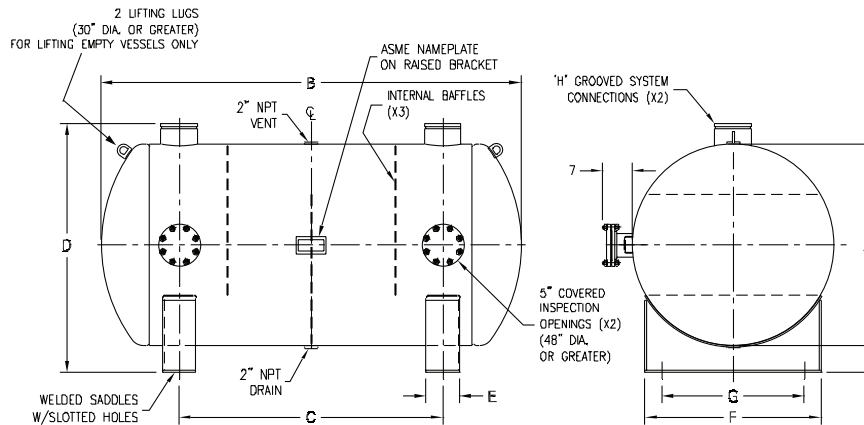
'BHT' Grooved Horizontal Buffer Tanks with Top Connections

| Model | Tank Volume (gal.) | A | B | C | D** | E | F | G | H | APPROX WEIGHT (LBS.) |
|-----------------|--------------------|-----------------|-------------------|-------------------------------|---------------------|-------------------|----|----|-------------------|----------------------|
| | | Tank Dia. (in.) | Tank Height (in.) | Flange Spread (in.) Min./Max. | AFF to Flange (in.) | Saddle Data (in.) | | | Nozzle Size (in.) | |
| BHT0050F__-125N | 50 | 20 | 43 | 21-1/2 | 31 | 6 | 18 | 14 | 2, 3, 4 | 190 |
| BHT0075F__-125N | 75 | 24 | 46 | 22-1/4 | 35 | 6 | 22 | 18 | 2, 3, 4 | 240 |
| BHT0100F__-125N | 100 | 24 | 61 | 37-1/4 | 35 | 6 | 22 | 18 | 2, 3, 4 | 280 |
| BHT0125F__-125N | 125 | 24 | 76 | 52-1/4 | 35 | 6 | 22 | 18 | 2, 3, 4 | 330 |
| BHT0150F__-125N | 150 | 30 | 60 | 33 | 41 1/4 | 6 | 26 | 20 | 2, 3, 4 | 510 |
| BHT0180F__-125N | 180 | 30 | 71 | 44 | 41 1/4 | 6 | 26 | 20 | 2, 3, 4 | 590 |
| BHT0200F__-125N | 200 | 30 | 78 | 51 | 41 1/4 | 6 | 26 | 20 | 2, 3, 4 | 630 |
| BHT0250F__-125N | 250 | 36 | 69 | 37 | 47 1/4 | 8 | 32 | 24 | 3, 4, 6 | 710 |
| BHT0300F__-125N | 300 | 36 | 82 | 50 | 47 1/4 | 8 | 32 | 24 | 3, 4, 6 | 820 |
| BHT0350F__-125N | 350 | 36 | 94 | 62 | 47 1/4 | 8 | 32 | 24 | 3, 4, 8 | 910 |
| BHT0400F__-125N | 400 | 48 | 65 | 27-3/4 | 59 1/4 | 8 | 42 | 34 | 4, 6, 8 | 1010 |
| BHT0450F__-125N | 450 | 48 | 72 | 34-3/4 | 59 1/4 | 8 | 42 | 34 | 4, 6, 8 | 1080 |
| BHT0500F__-125N | 500 | 48 | 79 | 41-3/4 | 59 1/4 | 8 | 42 | 34 | 4, 6, 8 | 1160 |
| BHT0700F__-125N | 700 | 48 | 100 | 62-3/4 | 59 1/4 | 8 | 42 | 34 | 4, 6, 8 | 1300 |
| BHT0850F__-125N | 850 | 54 | 99 | 54-1/2 | 65 1/4 | 8 | 46 | 38 | 4, 6, 8 | 1880 |
| BHT1050F__-125N | 1050 | 60 | 99 | 50-1/8 | 71 1/4 ** | 8 | 52 | 44 | 6, 8, 10 | 2130 |
| BHT1250F__-125N | 1250 | 60 | 115-7/8 | 65 | 71 1/4 ** | 8 | 52 | 44 | 6, 8, 10, 12 | 2340 |
| BHT1500F__-125N | 1500 | 60 | 137-7/8 | 87 | 71 1/4 ** | 8 | 52 | 44 | 6, 8, 10, 12 | 2740 |
| BHT1750F__-125N | 1750 | 72 | 113-1/4 | 57 | 83 1/4 ** | 8 | 62 | 50 | 6, 8, 10, 12 | 3340 |
| BHT2000F__-125N | 2000 | 72 | 128-1/4 | 72 | 83 1/4 ** | 8 | 62 | 50 | 6, 8, 10, 12 | 3640 |
| BHT2500F__-125N | 2500 | 84 | 123-1/2 | 60 | 95 1/4 ** | 8 | 72 | 60 | 6, 8, 10, 12 | 5340 |
| BHT3000F__-125N | 3000 | 84 | 145-1/2 | 82 | 95 1/4 ** | 8 | 72 | 60 | 6, 8, 10, 12 | 6140 |

**Add 1" to 'D' dimension when specifying 10" or 12" nozzles.

SIZES & DIMENSIONS

All dimensions shown are subject to change and should not be used for pre-piping. Contact your local Taco representative should certified dimensional drawings be required.



BHT Grooved Connections

Refer to standard submittal as this sheet is a "Quick Reference Guide" only.
 change to: www.tacomfort.com / Products / Tanks / Chilled & Hot Water Buffer Tanks



Submittal Data 401-187

'BHS' Grooved Horizontal Buffer Tanks with Side Connections

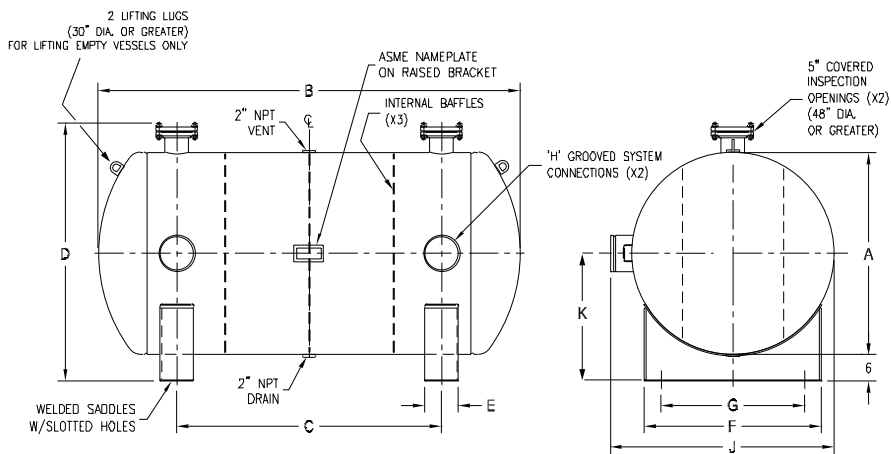
Quick Reference Guide

| Model | Tank Vol. (gal.) | A | B | C | D | E | F | G | H | J** | K | APPROX WEIGHT (LBS.) |
|-----------------|------------------|-----------------|-------------------|-------------------------------|---------------------|-------------------|----|----|-------------------|-------|--------|----------------------|
| | | Tank Dia. (in.) | Tank Height (in.) | Flange Spread (in.) Min./Max. | AFF to Flange (in.) | Saddle Data (in.) | | | Nozzle Size (in.) | (in.) | (in.) | |
| BHS0050G__-125N | 50 | 20 | 43 | 21-1/2 | 26 | 6 | 18 | 14 | 2, 3, 4 | 25 | 16 | 190 |
| BHS0075F__-125N | 75 | 24 | 46 | 22-1/4 | 30 | 6 | 22 | 18 | 2, 3, 4 | 29 | 18 | 240 |
| BHS0100G__-125N | 100 | 24 | 61 | 37-1/4 | 30 | 6 | 22 | 18 | 2, 3, 4 | 29 | 18 | 280 |
| BHS0125F__-125N | 125 | 24 | 76 | 52-1/4 | 30 | 6 | 22 | 18 | 2, 3, 4 | 29 | 18 | 330 |
| BHS0150G__-125N | 150 | 30 | 60 | 33 | 36 1/4 | 6 | 26 | 20 | 2, 3, 4 | 35 | 21-1/4 | 510 |
| BHS0180G__-125N | 180 | 30 | 71 | 44 | 36 1/4 | 6 | 26 | 20 | 2, 3, 4 | 35 | 21-1/4 | 590 |
| BHS0200G__-125N | 200 | 30 | 78 | 51 | 36 1/4 | 6 | 26 | 20 | 2, 3, 4 | 35 | 21-1/4 | 630 |
| BHS0250G__-125N | 250 | 36 | 69 | 37 | 42 1/4 | 8 | 32 | 24 | 3, 4, 6 | 41 | 24-1/4 | 710 |
| BHS0300G__-125N | 300 | 36 | 82 | 50 | 42 1/4 | 8 | 32 | 24 | 3, 4, 6 | 41 | 24-1/4 | 820 |
| BHS0350G__-125N | 350 | 36 | 94 | 62 | 42 1/4 | 8 | 32 | 24 | 3, 4, 8 | 41 | 24-1/4 | 910 |
| BHS0400G__-125N | 400 | 48 | 65 | 27-3/4 | 61 1/4 | 8 | 42 | 34 | 4, 6, 8 | 53 | 30-1/4 | 1010 |
| BHS0450G__-125N | 450 | 48 | 72 | 34-3/4 | 61 1/4 | 8 | 42 | 34 | 4, 6, 8 | 53 | 30-1/4 | 1080 |
| BHS0500G__-125N | 500 | 48 | 79 | 41-3/4 | 61 1/4 | 8 | 42 | 34 | 4, 6, 8 | 53 | 30-1/4 | 1160 |
| BHS0700G__-125N | 700 | 48 | 100 | 62-3/4 | 61 1/4 | 8 | 42 | 34 | 4, 6, 8 | 53 | 30-1/4 | 1300 |
| BHS0850G__-125N | 850 | 54 | 99 | 54-1/2 | 67 1/4 | 8 | 46 | 38 | 4, 6, 8 | 59 | 33-1/4 | 1880 |
| BHS1050G__-125N | 1050 | 60 | 99 | 50-1/8 | 73 1/4 | 8 | 52 | 44 | 6, 8, 10 | 65 | 36-1/4 | 2130 |
| BHS1250G__-125N | 1250 | 60 | 115-7/8 | 65 | 73 1/4 | 8 | 52 | 44 | 6, 8, 10, 12 | 65** | 36-1/4 | 2340 |
| BHS1500G__-125N | 1500 | 60 | 137-7/8 | 87 | 73 1/4 | 8 | 52 | 44 | 6, 8, 10, 12 | 65** | 36-1/4 | 2740 |
| BHS1750G__-125N | 1750 | 72 | 113-1/4 | 57 | 85 1/4 | 8 | 62 | 50 | 6, 8, 10, 12 | 77** | 42-1/4 | 3340 |
| BHS2000G__-125N | 2000 | 72 | 128-1/4 | 72 | 85 1/4 | 8 | 62 | 50 | 6, 8, 10, 12 | 77** | 42-1/4 | 3640 |
| BHS2500G__-125N | 2500 | 84 | 123-1/2 | 60 | 97 1/4 | 8 | 72 | 60 | 6, 8, 10, 12 | 89** | 48-1/4 | 5340 |
| BHS3000G__-125N | 3000 | 84 | 145-1/2 | 82 | 97 1/4 | 8 | 72 | 60 | 6, 8, 10, 12 | 89** | 48-1/4 | 6140 |

**Add 1" to 'J' dimension when specifying 10" or 12" nozzles.

SIZES & DIMENSIONS

All dimensions shown are subject to change and should not be used for pre-piping. Contact your local Taco representative should certified dimensional drawings be required.



BHS Grooved Connections

Refer to standard submittal as this sheet is a "Quick Reference Guide" only.
 change to: www.tacomfort.com / Products / Tanks / Chilled & Hot Water Buffer Tanks



Buffer Tank Coding Matrix with Baffles

| Position | 1, 2 | 3 | 4, 5, 6,7 | 8 | 9, 10 | 11 | 12, 13, 14 | 15 | 16 |
|-------------|--------------|---------------------|-------------|-----------------|-------------|-----------------|------------|------------|----------|
| Description | Buffer Tanks | Connection Location | Gallons | Connection Type | Nozzle Size | Design Temp. °F | Design psi | Insulation | Options |
| Part Number | BT | H | 0050 | F | 04 | - | 125 | N | N |

| | | | | | | | | | |
|-------------------------|------------|--|---------|--|--|-----|---------------------------------------|--|---|
| 1, 2, 3 | | | | | 9, 10 | | | | |
| Buffer Tanks | BTH | Vertical Buffer Tank, Base Ring High Connections | | | Nozzle Size | 02 | 2" ANSI | | |
| Carbon Steel | | | | | | 03 | 3" ANSI | | |
| Construction | BTL | Vertical Buffer Tank, Base Ring High Connections | | | | 04 | 4" ANSI | | |
| | | | | | | 06 | 6" ANSI | | |
| | BHL | Horizontal Buffer Tank Low Connections | | | | 08 | 8" ANSI | | |
| | BHH | Horizontal Buffer Tank High Connections | | | | 10 | 10" ANSI | | |
| | BHT | Horizontal Buffer Tank Top Connections | | | | 12 | 12" ANSI | | |
| | BHS | Horizontal Buffer Tank Side Connections | | | | --- | <i>Custom Size Request*</i> | | |
| | CT | <i>Custom Tank*</i> | | | 11 | | | | |
| | | | | | Design Temp. °F | - | 375°F, Standard, BT Series | | |
| | | | | | | A | 400°F | | |
| | | | | | | B | 450°F | | |
| | | | | | | 9 | <i>Custom Temp Request*</i> | | |
| 4, 5, 6,7 | | | | | 12, 13, 14 | | | | |
| Capacity Gallons | 0050 | 50 | Gallons | | Design Pressure | 125 | psi | | |
| | 0075 | 75 | Gallons | | | 150 | psi | | |
| | 0100 | 100 | Gallons | | | 9 | <i>Custom Pressure Request*</i> | | |
| | 0125 | 125 | Gallons | | | | | | |
| | 0150 | 150 | Gallons | | | | | | |
| | 0180 | 180 | Gallons | | 15 | | | | |
| | 0200 | 200 | Gallons | | Insulation Options | N | No Insulation required | | |
| | 0250 | 250 | Gallons | | | H | 1" Silicon/Fiberglass | | <i>For Interior use. Hot Water Insulation.</i> |
| | 0300 | 300 | Gallons | | | J | 2" Silicon/Fiberglass | | <i>For Interior use. Chilled Water Insulation.</i> |
| | 0350 | 350 | Gallons | | | C | 1/2" Armaflex | | <i>For Exterior Use. Chilled Water Insulation.</i> |
| | 0400 | 400 | Gallons | | | D | 1" Armaflex | | |
| | 0450 | 450 | Gallons | | | F | 1-1/2" Armaflex | | |
| | 0500 | 500 | Gallons | | | G | 2" Armaflex | | |
| | 0700 | 700 | Gallons | | | K | 1/2" Armaflex w/ Alum. Jacket | | |
| | 0850 | 850 | Gallons | | | M | 1" Armaflex w/ Alum. Jacket | | |
| | 1050 | 1050 | Gallons | | | P | 1-1/2" Armaflex w/ Alum. Jacket | | |
| | 1250 | 1250 | Gallons | | | R | 2" Armaflex w/ Alum. Jacket | | |
| | 1500 | 1500 | Gallons | | | | | | <i>For Interior/Exterior Use. Hot Water/Chilled Water Insulation.</i> |
| | 1750 | 1750 | Gallons | | | S | 2" Polyisocyanurate with Alum. Jacket | | |
| | 2000 | 2000 | Gallons | | | T | 3" Polyisocyanurate with Alum. Jacket | | |
| | 2500 | 2500 | Gallons | | | 9 | <i>Custom Insulation Request*</i> | | |
| | 3000 | 3000 | Gallons | | | | | | |
| | --- | <i>Custom Gal. Request*</i> | | | 16 | | | | |
| 8 | | | | | Options (Vertical BT Models Only) | N | None | | |
| Connection | F | Flanged | | | 2" & 2-1/2" Only | A | Anchor Clips (4) | | |
| | G | Grooved | | | | | | | |
| | T | Threaded, FNPT up to 2-1/2" | | | | | | | |
| | 9 | <i>Custom Type Request*</i> | | | | | | | |

PLEASE NOTE: Any "Custom Request" a Part Number to this Matrix, Sketch & Description MUST BE Sent with the Request.



Selection Software (APPS)

Buffer Tanks:

https://apps.tacocomfort.com/wizard_buffer_tanks.html

Taco Inc., 1160 Cranston Street, Cranston, RI 02920 / (401) 942-8000
 Taco (Canada) Ltd., 8450 Lawson Road, Unit #3, Milton, Ontario L9T 0J8 / (905) 564-9422
www.TacoComfort.com